


# STARDUST

v 7.0

# HELMETS ARE NOT OPTIONAL!

A female rock climber is shown from the chest up, wearing a bright orange Mammut helmet. She is reaching her right arm up towards a light-colored, textured rock face. The background is a close-up of the rock surface, showing various cracks and textures. The climber's expression is focused.

While many efforts have been made to clean all climbing lines, rock continues to fall from time to time. Please wear helmets at all times while climbing and standing at the base of the climbs. Always be alert and on a look out for falling rock.



## BRIEF HISTORY and DEVELOPMENT

While Ras Al Khaima is an established UAE climbing destination, this particular wadi has been developed only since 2015. After the beloved Hatta Crag and Wave Wall became inaccessible, a group of climbers sought new sport climbing destinations within UAE. They discovered the towering wadi, in the area by mere accident. Its discovery coincided with the untimely passing of David Bowie. In his honor they called it Stardust. There have been persistent efforts since, of setting new lines and creating more opportunities for great climbing. The former UAE Bolting Fund and individual donations have generously supported the route setting efforts.

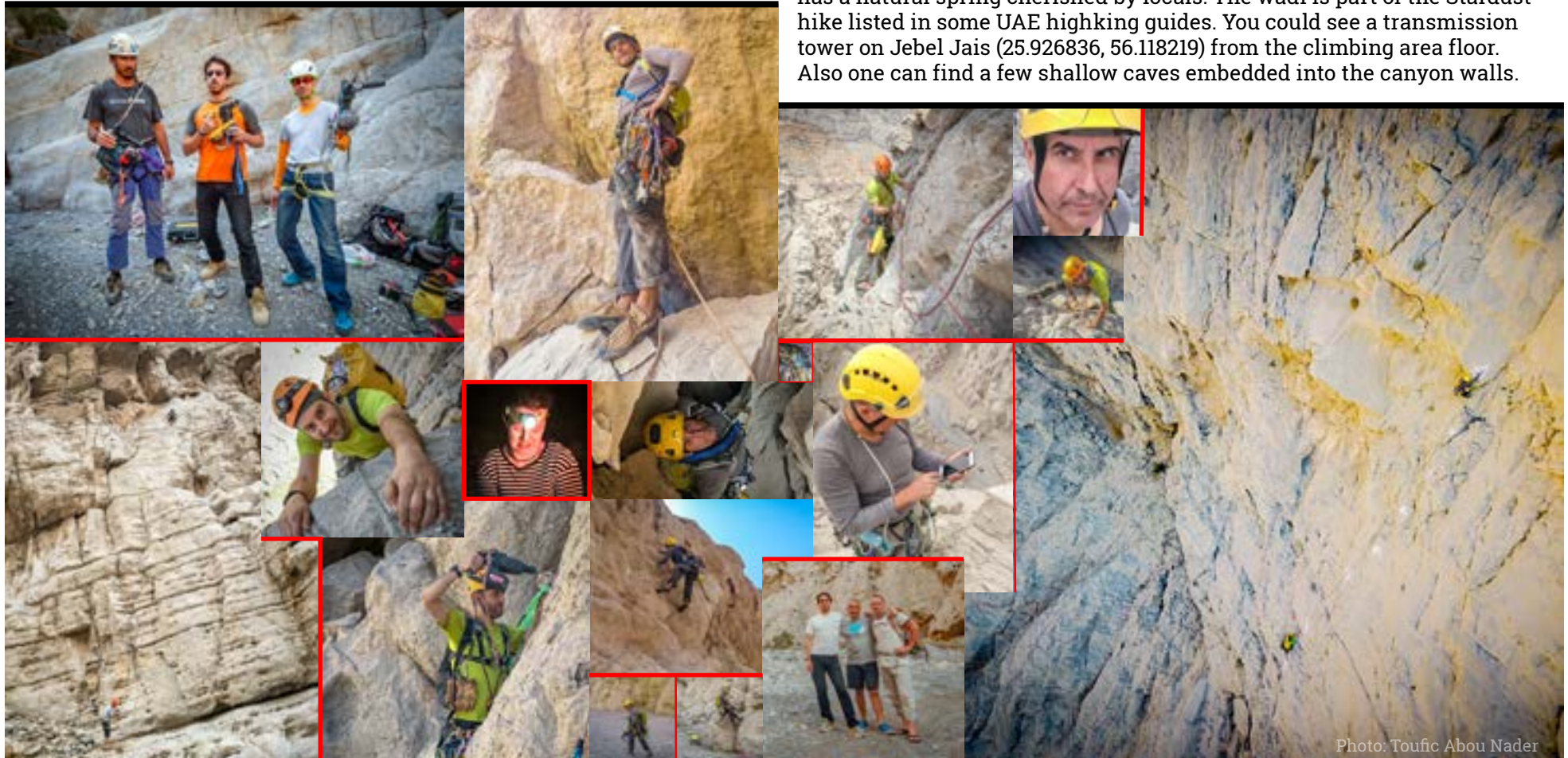


Photo: Toufic Abou Nader

## THE SETTING / LOCATION

Wadi Rahbeh [الرحبة], aka Stardust - after the goat farm, is approximately 30 m wide and 400 m long after the goat farm climbing area. Most families that leave at the entrance of the wadi are of the Rihab clan thus the local name for the wadi. There are rock walls on both sides with varied angles and breakages. The rock is limestone with varied levels of weathering. Occasional and unpredictable rock falls might occur so please be alert around the whole climbing area. Wearing helmets is imperative. There are opportunities for hiking into the widening and meandering canyon upstream. An hours walk or so towards the big wall in front of the wadi has a natural spring cherished by locals. The wadi is part of the Stardust hike listed in some UAE highking guides. You could see a transmission tower on Jebel Jais (25.926836, 56.118219) from the climbing area floor. Also one can find a few shallow caves embedded into the canyon walls.



## APPROACH

1. Drive from anywhere in UAE or Oman and take E11 to small local turn at 25°55'50.8"N 56°03'27.8"E ([25.930763](#), [56.057729](#)).
2. Follow the asphalt road forward.
3. Turn right when you reach the T-junction.
4. Follow the road and turn at second left. Go forward passing between two houses at the end of the paved road and go into the open wadi 25°55'36.5"N 56°04'02.6"E ([25.926796](#), [56.067399](#))
5. After 3 km you will reach a goat farm on your right. Proceed forward as you keep to the right side of the wadi.
6. Apx. 100 m after the goat-farm you will see Sector 1 on your right.
7. Park anywhere you feel comfortable (be aware of falling rocks)

## WHAT IS SUITABLE FOR

- **Sport Climbing** (dominant set up of climbing)
- **Trad Climbing** (possible but not setup, the next wadi to the South, Gray Skull, offers great many lines of various difficulties – 25°54'35.5"N 56°04'20.8"E ([25.909868](#), [56.072456](#)))
- **Vertical cave training and rope work** (Official outdoor training area for MECET caving club of Dubai)
- **Rappelling / Abseiling**
- **Hiking**
- **Camping** (best opportunities are in the both ends of the climbing area and a small section in the middle)

## RESPECT THE SETTING

This is a very serene and tranquil place. We have discussed our presence with the goat farm owner. He has no objections of us being there provided we preserve the ambiance. The only exception is the presence of dogs. They must be kept away from the farm animals, on leash or better be left at home. We hope we keep the wadi clean and joyous.

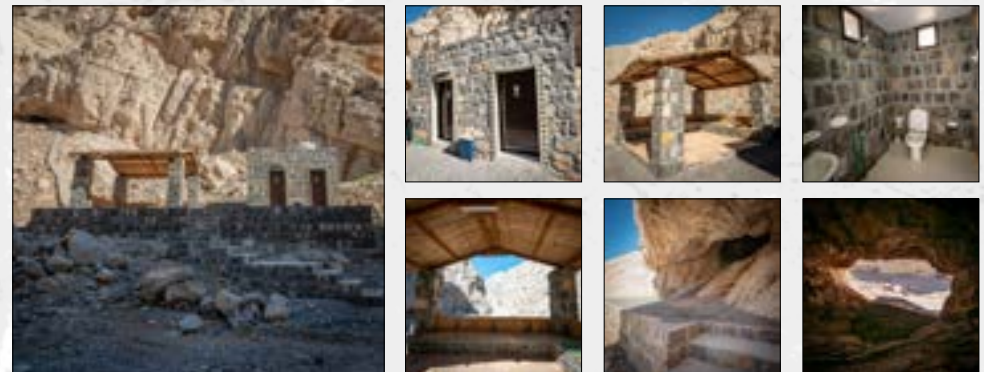
## WEATHER AND THE ELEMENTS

Stardust is located in Ras Al Khaima approximately 0.5 km from the coast inland. As in all outdoor locations in UAE the optimum climbing season is from late September to mid-May. The comfortable camping season is October to March. Be aware that humidity is very unpredictable and might impact substantially the atmospheric experience.

The north wall (where all climbing routes are) goes in shade sometime at 10 – 11 AM or earlier in the winter. Some sectors and climbs orientation varies so there might be some differences of shady conditions from climb to climb before the whole wall is in shade. Although the rock dries up relatively fast, it might become more brittle after intense rain (those do come from time to time) so it is good practice to wait a day before climbing.

## AMMENITIES

At the end of 2018 Shaikh Saud (the ruler of Ras Al Khaima) decided to build facilities at the climbing area, upon the urging of the goat farm owner. In approximately one month, a group of stone masons and craftsmen built a state-of-the-art facility for the benefit of the wadi visitors. They feature western style toilets, water tank, showers, interior lighting controlled by motion detection and adjacent rest shed. There was a talk for installing a cell tower for better mobile phone coverage. Additionally, there are stairs leading up to a cavern above with installed artificial lighting inside and observation deck in front of it.



Google Mapping

Latitude: 25° 50' 50.532" N

Longitude: 55° 53' 7.848" E

Decimal Degrees

50.8422

55.885278

Degrees, Minutes & Seconds

N50 50 31

E55 53 07

GPS

N 50 50.532

E 55 53.117

# SECTORS

## AFTER THE GOAT FARM



## BEFORE THE GOAT FARM







1A	<b>Because We Are Young</b> 28m / 11 bolts	6a+
1B	<b>Youthful Indiscretion</b> 29m / 13 bolts	6a+



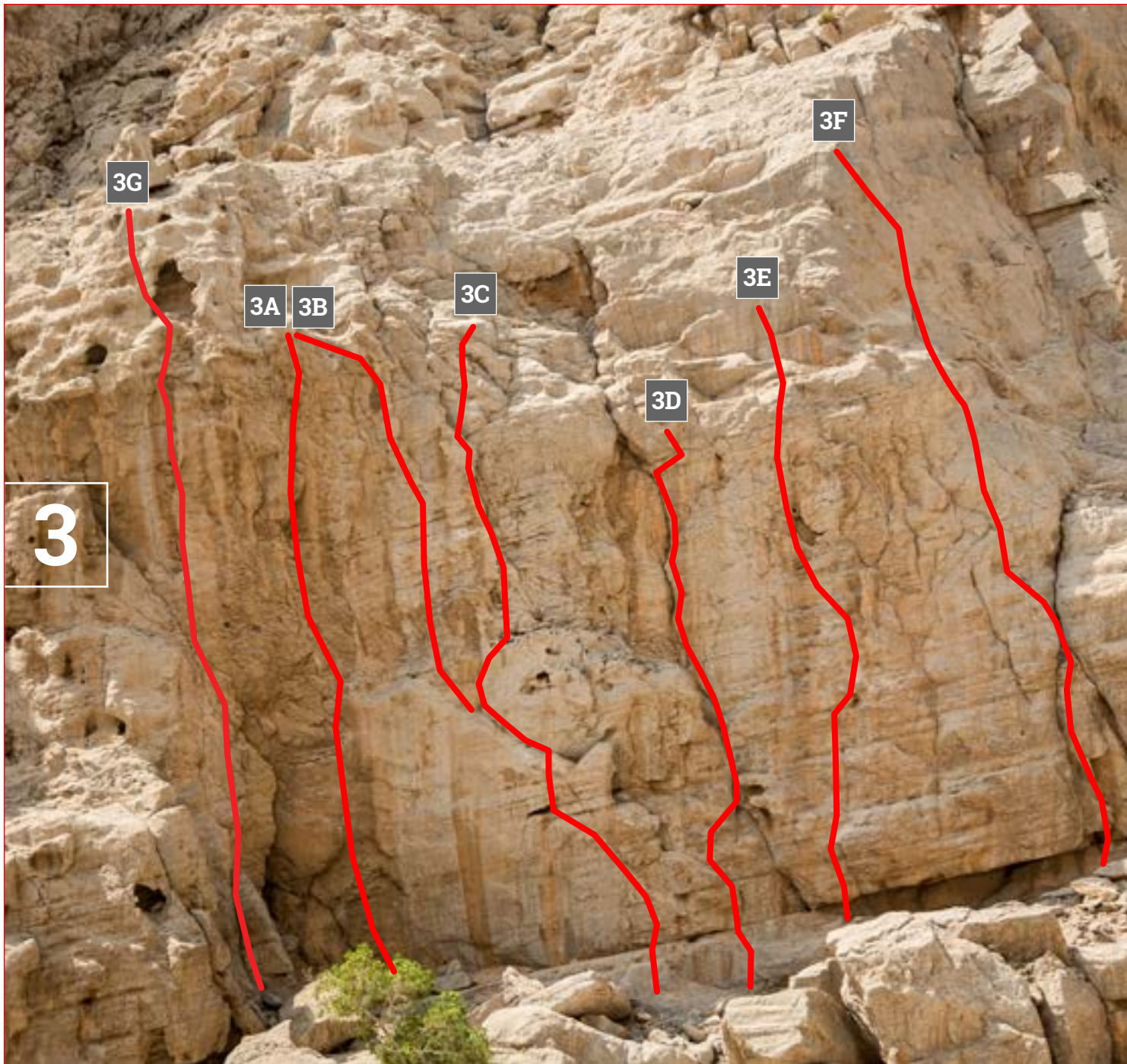


# MECET

Dubai caving club training area







3A	<b>Ground Control</b>	22m / 11 bolts	7b
3B	<b>Deviation d'un trou à l'autre</b>	22m / 10 bolts	6c
3C	<b>Relentless Life</b>	20m / 11 bolts	6b+
3D	<b>The Right Choice</b>	20m / 9 bolts	6b+
3E	<b>Elle a Deux Trous</b>	28m / 10 bolts	6c+
3F	<b>Noctiluca Scintillans</b>	32m / 14 bolts	6b+
3G	<b>Hang On to Yourself</b>	27m / 13 bolts	7b





4A	<b>Hug Me</b>	22m / 12 bolts	5c
4B	<b>Cielo</b>	22m / 12 bolts	6a+
4C	<b>A Happy Land</b>	20m / 11 bolts	5b+
4D	<b>The Unforgiven</b>	20m / 11 bolts	6a
4E	<b>Kiss Me</b>	29m / 12 bolts	5c
4F	<b>It's No Game</b>	30m / 11 bolts	5c+





**NO climbs in this area yet.**





6A	<b>It All Comes Down</b>	25m / 11 bolts	5c+
6B	<b>Follow the Rhythm</b>	24m / 10 bolts	4c
6C	<b>Absolute Beginners</b>	26m / 14 bolts?	4b
6D	<b>Rising Potential</b>	30m / 11 bolts	5a
6E	<b>Volare</b>	25m / 11 bolts	5b+
6F	<b>Dancing Dust</b>	30m / 13 bolts	5b+
6G	<b>Velvet Goldmine</b>	33m / 13 bolts	6b
6E	<b>Tango Lessons</b>	25m / 8 bolts	4c
6Ee	<b>Tango Lessons (p2)</b>	28m / 11 bolts	5a+





7A	<b>Let's Dance</b> (beggining of multi-pitch) 29 m / 11 bolts	5b+
7B	<b>Never Let Me Down</b> (beggining of multi-pitch) 29 m / 11 bolts	6a
7C	<b>Life on Mars</b> 30 m / 10 bolts	5a+
7D	<b>Veni Vidi Vici</b> 20 m / 8 bolts	6b



ELEV: 360 m

7MA

### Let's Dance [ direct ]

P8	35 m	06 bolts	4b+	R1a	20 m
				R1b	15 m
P7	29 m	07 bolts	5a	R2	29 m
P6	25 m	07 bolts	5a+	R3	23 m
P5	29 m	08 bolts	5b	R4	29 m
P4	29 m	12 bolts	6b	R5	29 m
P3a	07 m	03 bolts	6a+	R6a	07 m
P3	29 m	09 bolts	5b+	R6b	29 m
P2	27 m	04 bolts	4b	R7	27 m
P1	28 m	09 bolts	5b+	R8	28 m

### Tango Lessons |> Let's Dance

P2	26 m	09 bolts	5a+	R7	26 m
P1	23 m	09 bolts	4c+	R8	23 m

Let's Dance

Tango Lessons

ELEV: 122 m



Top Elev: 367 m

ELEV: 360 m

ELEV: 200 m

7MB

Let's Dance

R1	26 m
R2	30 m
R3	27 m
R4	26 m
R5	25 m
R6	26 m
R7	22 m
R8	28 m

P9	25 m	05 bolts	5a
P8	28 m	10 bolts	6b
P7	28 m	13 bolts	6b
P6a	28 m	11 bolts	6b
P6	25 m	06 bolts	5b
P6+	24 m	06 bolts	5a
P5+	30 m	13 bolts	6c+
P5a	27 m	09 bolts	6c+
P5	26 m	11 bolts	7c
T1	25 m	09 bolts	4b
P4	29 m	10 bolts	6a+
P3	28 m	12 bolts	6b
P2	25 m	02 bolts	4b
P1	26 m	11 bolts	6a

ELEV: 122 m





8A	<b>The Man Who Sold the Bolts</b>	25m / 11 bolts	6b+
8B	<b>Someone Up There Likes Me</b>	34m / 13 bolts	6a
8Cr	<b>Thunderbolt (right finish)</b>	28m / 14 bolts	6b+
8Cl	<b>Thunderbolt (left finish)</b>	28m / 14 bolts	6c
8D	<b>One Bolted Over the Cuckoo's Nest</b>	31m / 13 bolts	6a+





9A	<b>Everybody Loves Sunshine</b> (beginning of multi-pitch)	28m / 13 bolts	6a+
9B	<b>Cactus</b> (beginning of multi-pitch - use long slings/draws to reduce friction)	35m / 13 bolts	6a
9C	<b>Everything's Alright</b>	26m / 10 bolts	5c+
9D	<b>Get Real</b>	28m / 8 bolts	4c
9E	<b>Candidate</b>	29m / 11 bolts	5c+



ELEV 240 m

**R1** 26 m

**R2** 27 m

**R3** 28 m

9M

<b>P1</b>	35 m	13 bolts	6a
<b>P1*</b>	28 m	13 bolts	6a+
<b>P1#</b>	28 m	8 bolts	4c
<b>P2</b>	26 m	08 bolts	5a+
<b>P2*</b>	25 m	09 bolts	5b
<b>P3*</b>	24 m	04 bolts	5a
<b>P3a</b>	38 m	16 bolts	6b
<b>P3b</b>	36 m	14 bolts	6a+
<b>P3c</b>	34 m	14 bolts	6c
<b>T1</b>	20 m	06 bolts	4a

ELEV: 138 m





**C9A Approach**

28m / 2 bolts

4a

**C9B Under Pleasure**

(It requires 70+ m rope)

36m / 18 bolts

>6a

**C9C Modern Love**

(It requires 70+ m rope)

35m / 17 bolts

>6a

**C9D Lazarus**

28m / 14 bolts

>6a

**C9E Project**

C9







**Ia** **Souffler n'est pas jouer**  
(needs 6 long quickdraws)  
37m / 18 bolts **7a**



# LIST OF CLIMBS [ 42/6 ]

NAME GRADE SECTOR

## GRADE 4

**Absolute Beginners** 4b 6

**Follow the Rhythm** 4c 6

**Get Real** 4c 9

**Tango Lessons** 4c 6

## GRADE 5

**Rising Potential** 5a 6

**Life on Mars** 5a+ 7

**Tango Lessons (p2)** 5a+ 6

**Volare** 5b+ 6

**Dancing Dust** 5b+ 6

**A Happy Land** 5b+ 4

**Let's Dance** 5b+ 7

**Hug Me** 5c 4

**Kiss Me** 5c 4

**Candidate** 5c+ 9

**Everything's Alright** 5c+ 9

**It All Comes Down** 5c+ 6

**It's No Game** 5c+ 4

NAME GRADE SECTOR

## GRADE 6

**Cactus** 6a 9

**Never Let Me Down** 6a 7

**Someone Up There Likes Me** 6a 8

**The Unforgiven** 6a 4

**Because We Are Young** 6a+ 1

**Cielo** 6a+ 4

**Everybody Loves Sunshine** 6a+ 9

**One Bolted Over the Cuckoo's Nest** 6a+ 8

**Youthful Indiscretion** 6a+ 1

**Velvet Goldmine** 6b 6

**Veni Vedi Vici** 6b 7

**Noctiluca Scintillans** 6b+ 3

**Relentless Life** 6b+ 3

**The Right Choice** 6b+ 3

**The Man Who Sold The Bolts** 6b+ 8

**Tunderbolt (right finish)** 6b+ 8

**Deviation d'un trou à l'autre** 6c 3

**Tunderbolt (left finish)** 6c 8

**Elle a Deux Trous** 6c+ 3



# LIST OF CLIMBS continued

NAME	GRADE	SECTOR	NAME	GRADE	SECTOR
------	-------	--------	------	-------	--------

## GRADE 7

<b>Souffler n'est Pas Jouer</b>	<b>7a</b>	<b>I</b>
---------------------------------	-----------	----------

<b>Hang On to Yourself</b>	<b>7b</b>	<b>3</b>
----------------------------	-----------	----------

<b>Grownd Control</b>	<b>7b+</b>	<b>3</b>
-----------------------	------------	----------

## GRADE >6a

<b>Under Pleasure</b>	<b>&gt;6a</b>	<b>C9</b>
-----------------------	---------------	-----------

<b>Modern Love</b>	<b>&gt;6a</b>	<b>C9</b>
--------------------	---------------	-----------

<b>Lazarus</b>	<b>&gt;6a</b>	<b>C9</b>
----------------	---------------	-----------

## MULTI-PITCH

<b>Everyone Loves Sunshine</b>	<b>5a</b>	<b>9M</b>
--------------------------------	-----------	-----------

<b>Cactus - Left (CL)</b>	<b>6c</b>	<b>9M</b>
---------------------------	-----------	-----------

<b>Cactus - Center (CC)</b>	<b>6a</b>	<b>9M</b>
-----------------------------	-----------	-----------

<b>Cactus - Right (CR)</b>	<b>6b+</b>	<b>9M</b>
----------------------------	------------	-----------

<b>Let's Dance</b>	<b>6b</b>	<b>7MA</b>
--------------------	-----------	------------

<b>Never Let Me Down</b>	<b>7c/6c+</b>	<b>7MB</b>
--------------------------	---------------	------------




A photograph of a steep, light-colored rock face with two goats. One goat is in the lower left, and another is higher up on the right. A red text box is overlaid in the center.

**A SPECIAL THANK YOU TO THE UAE  
CLIMBING COMMUNITY FOR THEIR  
ENTHUSIASM, COMRADERY AND  
HAPPY VIBES.**

**ACKNOWLEDGEMENTS:**

**LT** | Ludmil Trenkov  
**KN** | Khajag Nazarian  
**OS** | Oliver Schwesinger  
**EC** | Eric Claudel  
**FA** | Francesco Arneodo

**TG** | Theo Giani   
**IM** | Ioana Maris  
**SJ** | Sergio Juarez  
**AM** | Alberto Michelotti  
**FG** | Federico Galbieri

**Stardust Climbing Crag is commerce-free destination  
supported by the climbing community. We hope that  
remains so in perpetuity.**